

# TE AHO POUTIAKI

## PARTICIPATORY PHILANTHROPY FUND POLICY

### ABOUT THE FUND



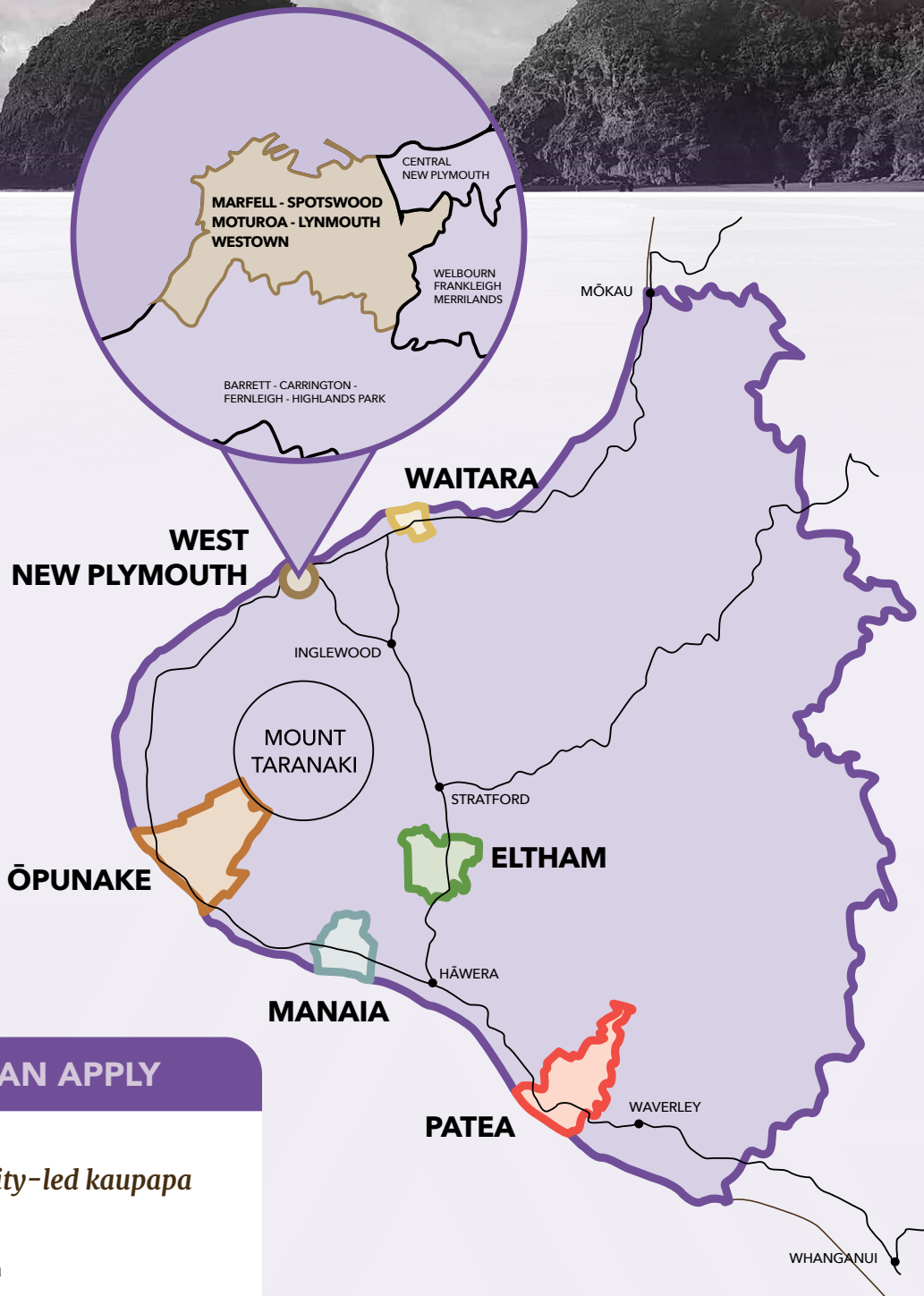
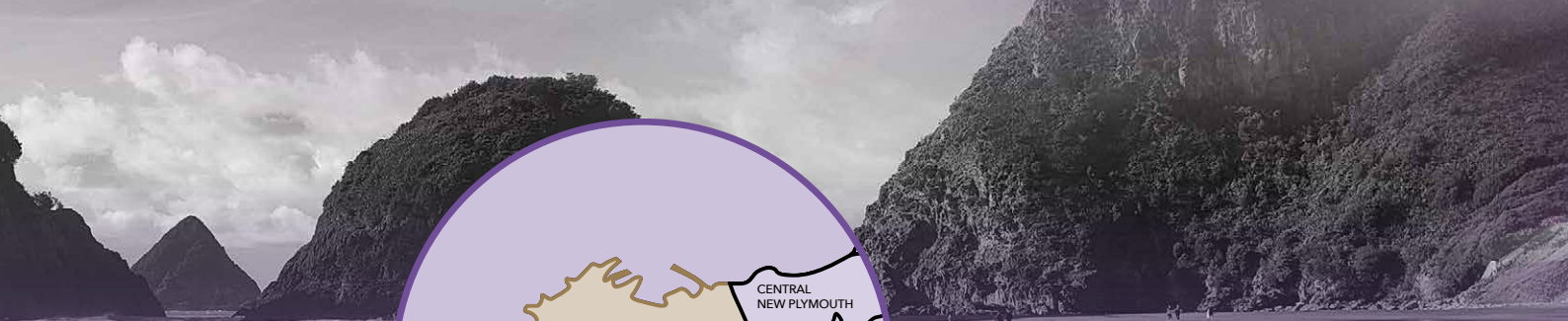
#### *“Participatory philanthropy”*

*Placing communities at the center of grant-making by giving them the ability to decide who and what to fund.*

*Focused on equity, supporting Taranaki communities to lead solutions where the need is greatest. Aimed to nurture grassroots community leadership, enabling under-represented voices to access funds, to support community-driven innovation.*

*Te Aho Poutiaki supports three funding streams totalling \$300K; each tailored to different levels of initiative maturity and community readiness:*

<i>Funding Stream</i>	<i>Purpose</i>	<i>Support</i>
<i>Kākano</i>	<i>Seed funding for new ideas – early-stage, community-led kaupapa with potential to grow.</i>	<i>Funding + regular mentoring/check-ins</i>
<i>Pūtake</i>	<i>Support funding to develop kaupapa – suited to grassroots projects, hapori-led mahi, or collectives still finding their feet.</i>	<i>Funding + light/optional support</i>
<i>Rākau</i>	<i>Funding for established kaupapa doing meaningful mahi outside of day-to-day operations – across areas like kaupapa Māori, taiao, hauora, and education.</i>	<i>Funding only (support on request)</i>



## WHO CAN APPLY

*Community-led kaupapa from:*

-  - Pātea
-  - Eltham
-  - Manaia
-  - Ōpunakē
-  - Waitara
-  - West New Plymouth (Marfell, Spotswood, Moturoa, Lynmouth & Westown).

## FUNDING CRITERIA

*Applications must:*

- Be aligned to one of the three funding streams
- Reflect local priorities and aspirations
- Be clear about impact, delivery readiness, and support needs
- Individuals, informal groups, and organisations
- Must be grounded in or guided by community voices

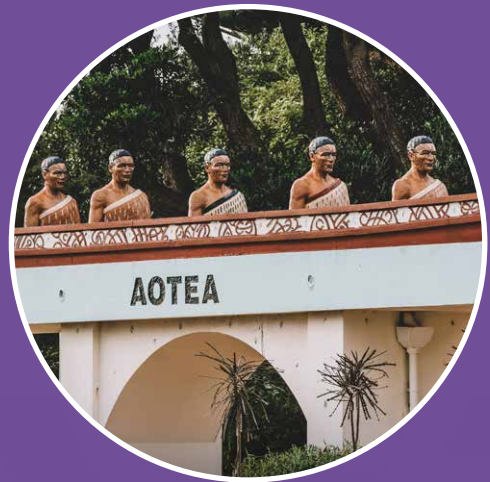


## TERMS OF FUNDING

- No retrospective funding
- Simple funding agreement required before payment
- Funds must be used as agreed
- Reporting scaled to funding stream

### ***We do not fund:***

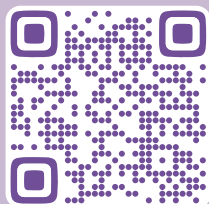
- Political groups or corporate clubs
- Alcohol or fundraising activities
- Initiatives that replicate existing services without added value
- School infrastructure unrelated to community benefit
- On gifting



## HOW TO APPLY

- Online form – Complete the application via Typeform
- Video – Record a short video answering the key questions via Typeform
- Phone interview – Talk through your application over the phone

**You can write your application, provide a video or audio file, or talk it over with us over the phone, whatever is easiest for you.**



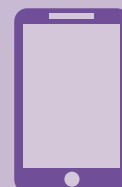
**Scan this QR code  
and apply online**

or



**Email us a text, video  
or audio file**

or



**Phone  
interview**